

# Bachelor of Science (B.S.) in Mathematics – Teaching Option

## Curriculum Map

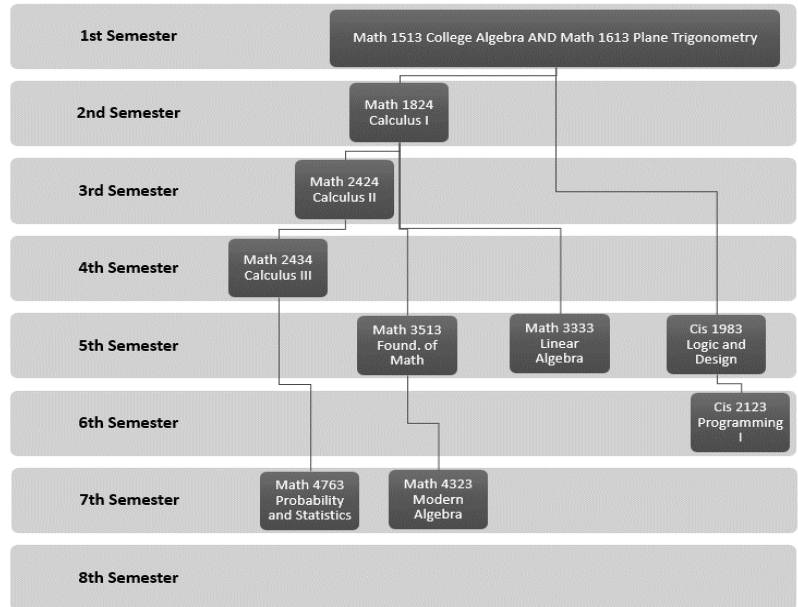
### Recommended Plan of Study

General Education Requirements (42 hours)		Sem		Grade	
<b>English Composition – 9 hours</b>					
___ ENGL 1113 Freshman English I					
___ ENGL 1213 Freshman English II					
___ Communications Elective _____					
<b>Mathematics – 3 hours</b>					
___ MATH 1513 College Algebra					
<b>Natural Science – 8 hours</b>					
___ BIOL 1304 Principles of Biology I					
___ Physical Science w lab (PHYS2014 recommend)					
<b>U.S. History and Government – 6 hours</b>					
___ HIST 1313 or HIST 1323 US History					
___ POLS 1013 American Government					
<b>Social Science – 6 hours</b>					
___ ECON 2013 Elements of Economics					
___ Soc. Science e.g., PSYC 1113, SOC 1113, CJ 1013					
<b>Humanities – 6 hours</b>					
___ HUM					
___ HUM					
<b>Student Success – 1 hour</b>					
___ UCSS 1111 Student Success Seminar					
<b>Liberal Arts and Science and Additional Education requirement – 3 hours</b>					
___ Math Major courses will count					
___ EDUC 2233 Diversity in Education					
<b>Major Requirements (78 hours)</b>					
<b>Mathematics Core – 35-36* hours</b>					
___ MATH 1513 College Algebra					
___ MATH 1613 Plane Trigonometry					
___ MATH 1824 Calculus I					
___ MATH 2424 Calculus II					
___ MATH 2434 Calculus III					
___ MATH 3333 Linear Algebra					
___ MATH 3443 Discrete Mathematics					
___ MATH 3513 Foundations of Mathematics					
___ MATH 3713 College Geometry					
___ MATH 4323 Modern Algebra					
___ MATH 4763 Probability and Statistics					
<b>Mathematics Electives (3000-4000 level) – 3 hours</b>					
___ MATH _____					
<b>Co-Requisite Requirement – 2 courses in computer programming – 6 hours</b>					
___ CIS 1983 Logic and Design (recommended)					
___ CIS 2123 Programming I					
<b>Professional Education – 33 hours</b>					
___ EDUC 2001 Education Seminar					
___ EDUC 2113 Introduction to Education					
___ EDUC 2213 Hum. Dev.: Child & Adol. Psych.					
___ EDUC 3223 Education of the Exceptional Child					
___ EDUC 4313 Educational Psychology					
___ EDUC 4333 Educational Technology					
___ EDUC 4322 Methods/Materials Secondary or MATH 4322 Methods/Materials Sec. Math					
___ EDUC 4533 Sec. Class. Mgmt. & Assessment					
___ EDUC 4720 Student Teaching in Sec. Schools					
<b>Electives – Sufficient to bring upper level hours to 40 and total credit hours to 120</b>					

First Semester – 16 hours	Second Semester – 17 hours
MATH 1513 College Algebra	MATH 1824 Calculus I
MATH 1613 Plane Trigonometry	ENGL 1213 Freshman English II
ENGL 1113 Freshman English I	BIOL 1304 Principles of Biology I
HIST 1313 or HIST 1323 US History	Humanities – 3 hours
Social Science e.g., PSYC 1113, SOC 1113, CJ 1013	POLS 1013 American Government
UCSS 1111 Student Success Seminar	
Third Semester – 14 hours	Fourth Semester – 13 hours
MATH 2424 Calculus II	MATH 2434 Calculus III
PHYS 2014 General Physics I	Humanities – 3 hours
EDUC 2001 Education Seminar	ECON 2013 Elements of Economics
EDUC 2113 Introduction to Education	EDUC 2213 Hum. Dev.: Child & Adol. Psych.
Fifth Semester – 15 hours	Sixth Semester – 15 hours
MATH 3513 Foundations of Mathematics	MATH 3713 College Geometry
MATH 3333 Linear Algebra	MATH 3443 Discrete Mathematics
CIS 1983 Logic and Design	CIS 2123 Programming I
EDUC 3223 Education of the Exceptional Child	EDUC 4333 Educational Technology
EDUC 4313 Educational Psychology	EDUC 4533 Sec. Class. Mgmt. & Assessment
Seventh Semester – 18 hours	Eighth Semester – 12 hours
MATH 4323 Modern Algebra	EDUC 4720 Student Teaching in Sec. Schools
MATH 4763 Probability and Statistics	
3000/4000 MATH and Other Electives – 10 hours	
EDUC 4322 Methods/Materials Secondary or MATH 4322 Methods/Materials Sec. Math	

This is a sample course sequence timeline only. This does not represent a contract, nor does it guarantee course availability. A student may require more than eight semesters to complete the degree.

### Math Course Sequence to be followed:



### Notes to Students:

- \*Math 1715 College Alg. and Trigonometry may be substituted for Math 1513 and Math 1613.
- No more than 12 semester hrs may be used for both general educ. and major requirements.
- All mathematics courses toward the math major must have a grade of C or better.

### Course Rotation:

#### Fall only courses:

- MATH 2424 Calculus II
- MATH 3513 Foundations of Mathematics
- MATH 4763 Probability and Statistics

#### Spring only courses:

- MATH 1824 Calculus I
- MATH 2434 Calculus III

